

XProtect® 2022 R1

New features

2022 R1 Feature list & Product compatibility

| | XProtect Essential+ | XProtect Express+ | XProtect Professional+ | XProtect Expert | XProtect Corporate |
|--|-------------------------------|-----------------------------|----------------------------------|---------------------------|------------------------------|
| Management Server Failover (add on) | | | | √ | √ |
| Single Sign On in XProtect | √ | √ | √ | √ | √ |
| Feature add: Multi-live streaming | - | √ | √ | Already included | Already included |
| Feature add: Adaptive streaming | - | √ | √ | Already included | Already included |
| Feature add: Direct streaming | - | √ | √ | Already included | Already included |
| XProtect Mobile – expanded bookmarks | | | √ | √ | √ |
| XProtect Smart Client - New export tab & workflow | √ | √ | √ | √ | √ |
| Refresh of hardware information in the Management Client | √ | √ | √ | √ | √ |
| Milestone AI Bridge | | | | √ | √ |
| Milestone Integration Platform VMS API | √ | √ | √ | √ | √ |
| Windows 11 supported OS | √ | √ | √ | √ | √ |
| XProtect 2022R1 on AWS | √ | √ | √ | √ | √ |

XProtect® 2022 R1

XProtect Management Server Failover Solution

Eliminate downtime and safeguard against service disruptions with Milestone's high availability failover solution

XProtect Management Server Failover solution is a complete solution that protects the Management Server (and the SQL server when installed on the same physical server) from hardware, software, and human error server failures. It assures operators can log in to the system and access live and playback video, as well as the system's configuration at all times.





A SYSTEM YOU CAN RELY ON 24/7

XProtect Management Server Failover Solution minimizes the impact that hardware malfunctions might have on your system. Its efficient design and simple configuration, give you the ability to switch to a reliable backup Management Server seamlessly and automatically when the primary one fails. It provides synchronous real-time file replication, automatic application failover, and automatic failback after a server failure, all in one solution.

YOUR SYSTEM NEVER SKIPS A BEAT

XProtect Management Server Failover Solution eliminates valuable downtime even if a server fails. Based on the principal of high availability, it provides redundancy and fault tolerance in your system by ensuring that the Management Server is always available, even during a failure. It keeps the servers connected by a mirrored link which enables them to synchronize and maintain an identical state between them. If one server experiences a failure, the other one automatically identifies it and failbacks to ensure a continuous operation.





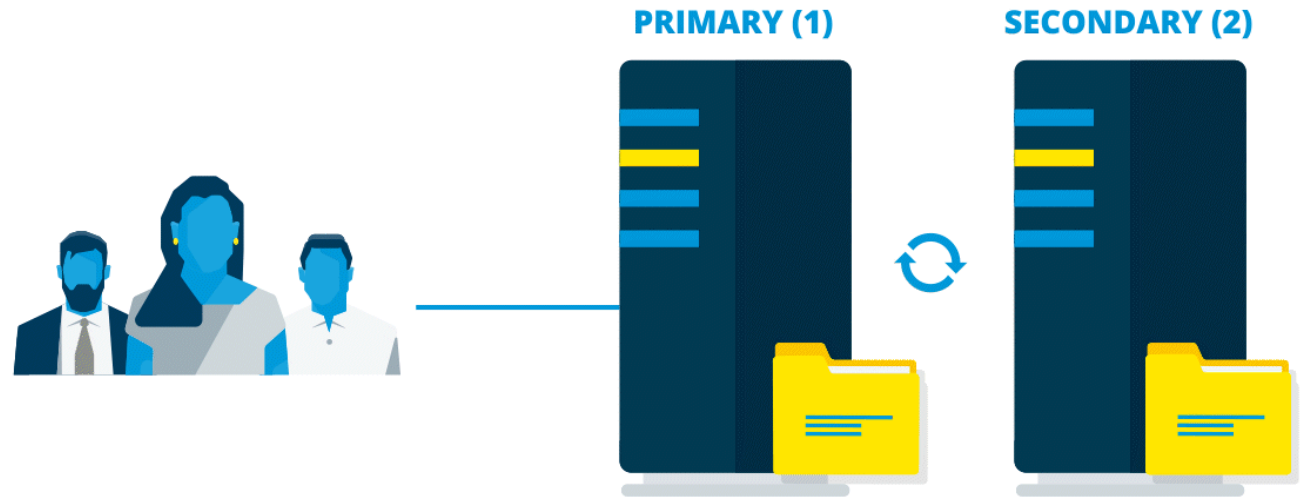
SIMPLE & AUTOMATED FAILOVER

XProtect Management Server Failover solution is a part of the XProtect installer version 2022 R1 or later. Its unique use of Synchronous Replication makes sure that all files opened by XProtect and SQL services are replicated in real time and with zero data loss. Once configured, failover and failback is implemented automatically.

1 In case of a failure in the primary server (1), the secondary server (2) takes over automatically with minimal downtime.

2 When the primary server is restarted, XProtect Management Server Failover solution implements automatic failback with reintegration of data without stopping XProtect and SQL services on the secondary server.

3 Once the system returns to synchronous replication between server 2 and server 1, the administrator can swap the role of primary and secondary and run XProtect and SQL services on the primary server.



AVOID THE COST OF 'BAND AID' FIXES

Think of XProtect Management Server Failover as an added insurance policy. The cost of implementing a failover solution is often significantly lower than the potential cost of downtime, lost business, damaged reputation, and rushed purchases of 'band aid' fixes.

XProtect Management Server Failover solution requires a Server License for both the primary and secondary management server, sold together as an [add-on product](#) for XProtect Expert and XProtect Corporate version 2022 R1 or later.

More information, prices, and relevant SKUs can be found on [MyMilestone](#) portal.

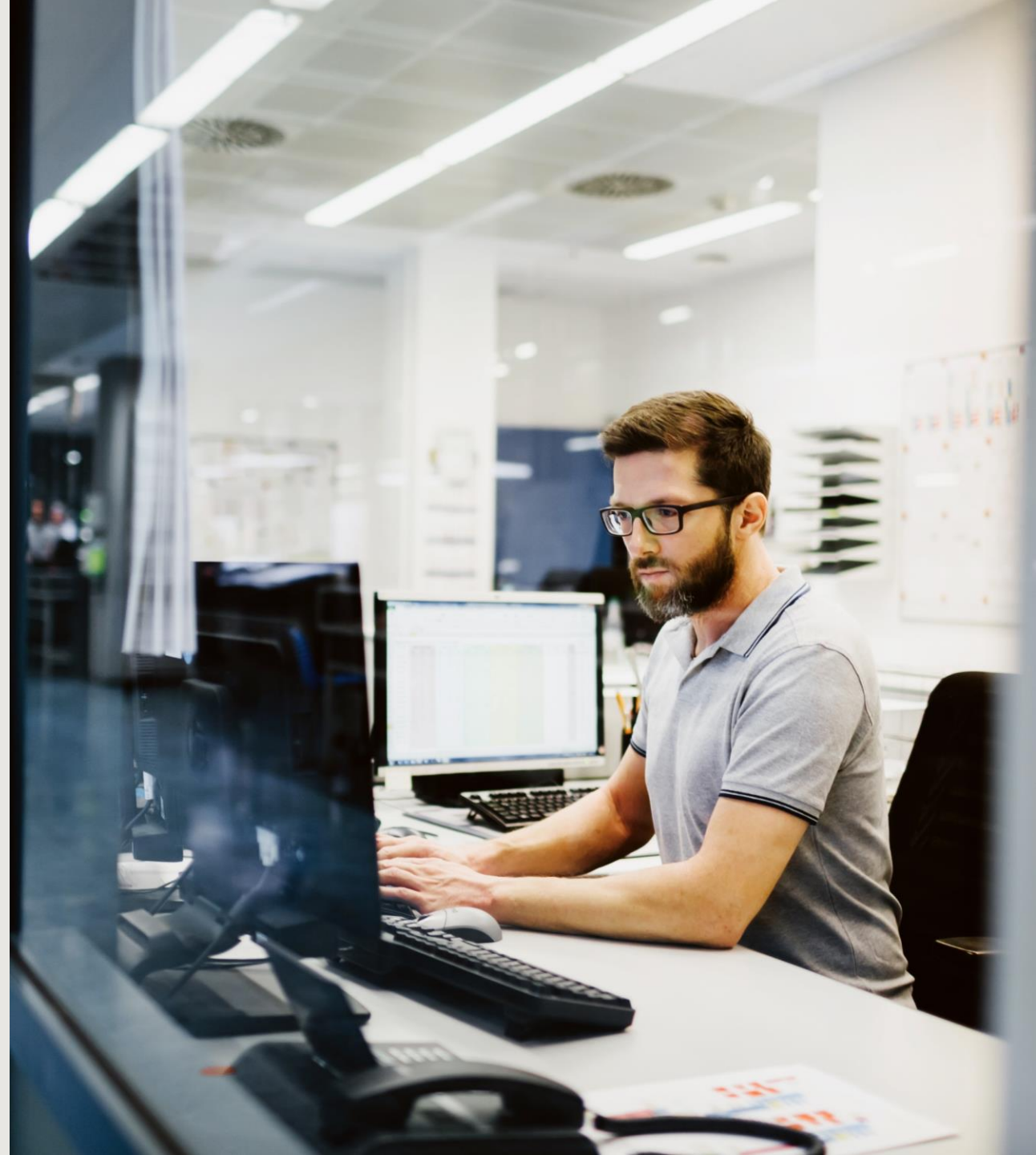


XProtect® 2022 R1

Single Sign On (SSO) in XProtect

SIGN INTO XPROTECT WITH YOUR CORPORATE CREDENTIALS USING SINGLE SIGN ON

Milestone XProtect® is all about flexibility, allowing you to choose the servers, cameras, and solutions that work best for your business. Now, you can also choose your preferred Identity and Access Management (IAM) and use your corporate credentials to sign into XProtect. This means more secure authentication and a streamlined authorization process.





STREAMLINING THE AUTHORIZATION PROCESS

Defining roles and user rights to control unauthorized access to the VMS could be a time-consuming manual process prone to human error for those who don't use Microsoft Active Directory.

By supporting the Open ID Connect (OIDC) protocol, XProtect 2022 R1 automates this process also for those who use OIDC, enhancing security and authorization control.



SIMPLER PROCESS, STRONGER AUTHENTICATION

Single sign-on simplifies username and password management for both users and administrators. Users no longer need to keep track of different sets of credentials, and administrators can quickly assign and relinquish login privileges based on users authorized in the IAM system.

This results in less manual work, stronger authentication, and a smoother user experience. SSO support is available for the Smart and Management clients in all XProtect products, version 2022 R1 or later.

okta



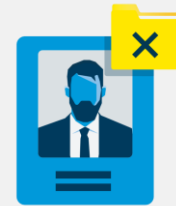
HOW DOES IT WORK



XProtect 2022 R1 implements the OpenID Connect (OIDC) protocol, an identity layer built on the commonly used OAuth 2.0 framework. This allows end-users to choose almost any IAM that uses this protocol.



The system administrator sets up user groups in the IAM associated with VMS roles during the initial configuration. These are then mirrored in the VMS, allowing users to log into XProtect with their corporate credentials and access the user rights allocated to them.



If a user leaves the organization or is removed from the corporate IAM, their access to the VMS is automatically revoked. This mirrored and automated process minimizes manual work and lowers the risk of human errors and unauthorized access to the VMS.

XProtect® 2022 R1

Value boosting XProtect Express+ and XProtect Professional+

Better viewing and streaming and reduced server load

- Strengthen your competitive edge and lower your total cost of ownership with an improved viewing experience that reduces the load on your hardware.
- XProtect Express+ and XProtect Professional+ can now get even more from their VMS with three features previously only available to XProtect® Expert and XProtect® Corporate customers.

New features include:

Multi-live streaming

Adaptive streaming

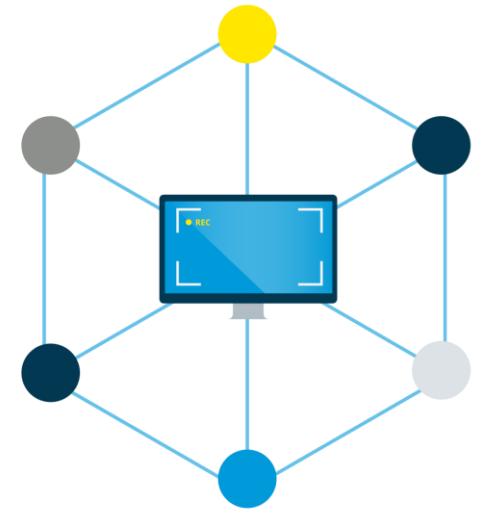
Direct streaming (Mobile Server)

Multi-live streaming

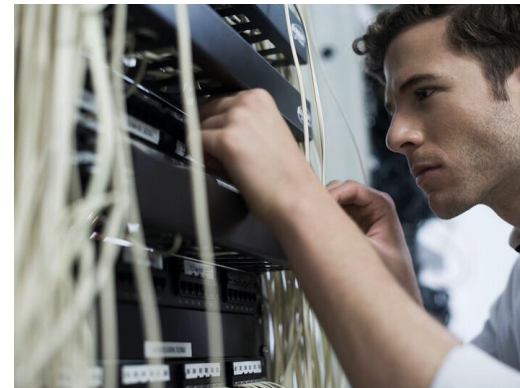
XProtect supports sending multiple live video streams, configured differently to multiple client workstations simultaneously. If XProtect Smart Client users have different bandwidth requirements, this feature allows them to select the stream that best fits their available resources.



Helps getting a better stream for the available resources

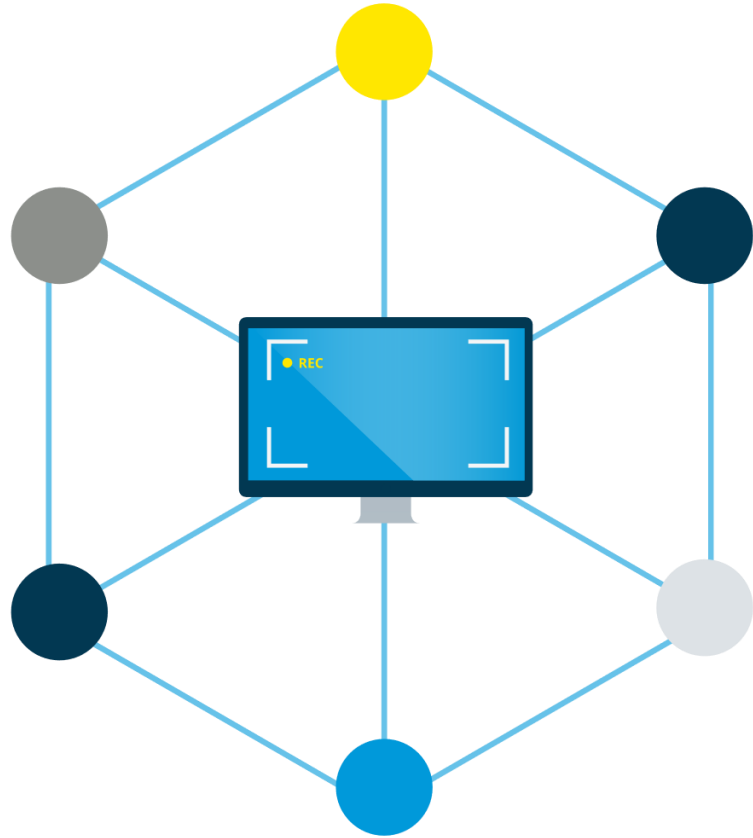


Particularly useful when multiple viewing sites have different bandwidth available



Multi-live streaming allows users to connect to the VMS from low bandwidth sites

Multi-live streaming – Key capabilities



1

Multi-live stream will allow a user to select the appropriate video stream for the available bandwidth

2

Multi-live stream allows to have high image resolution and quality for high bandwidth sites and optimal image resolution and quality for low bandwidth sites

3

Multi-live streaming is especially useful for users accessing a system from home with lower bandwidths and from VMS monitoring station with significant bandwidth

4

The user will get the stream that best fits the available bandwidth at their site

Adaptive streaming

Adaptive Streaming makes it possible for the viewer to receive a lower resolution stream from the recording server when a high resolution one is not required. The result is reduced load on the Recording Server and the Mobile Server and a more seamless viewing experience for the user



Substantial savings on hardware currently needed to decode high-resolution video streams



A smoother and more fluent viewing experience



Better use of bandwidth that can then be utilized for other needs in the organization

Adaptive streaming – Key capabilities



1

Adaptive streaming is useful when you view multiple live video streams. It optimizes the performance of the XProtect Recording and Mobile server and improves the viewing experience

2

Currently supported for live video in the XProtect Smart Client, XProtect Web Client and XProtect Mobile

3

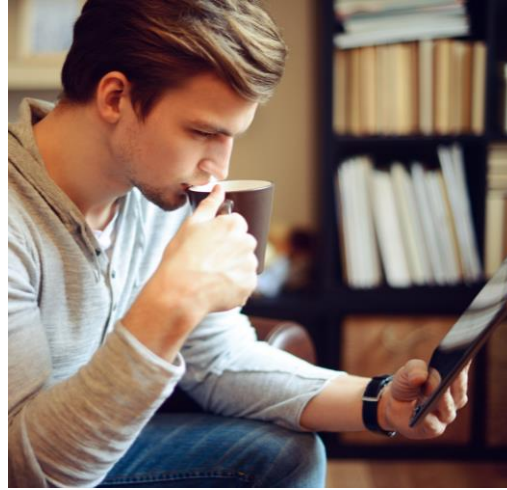
Optimizes video quality - selects the stream with the lowest available resolution that is equal to or higher than the requested resolution

4

Optimizes server performance - reduces the requested resolution and then selects the stream with the lowest available resolution that is equal to or higher than the reduced request

Direct streaming (Mobile server)

Drastically reduce your mobile server load with our new direct streaming feature, which lets you stream live video directly to XProtect Mobile and the XProtect Web Client



This feature also eliminates the resource-heavy video transcoding in the Mobile Server



Stream live video directly to XProtect with Direct streaming



Improved to handle more users and create a better viewing experience for mobile and web client users

Direct streaming – Key capabilities



1

Direct streaming is useful when you when you have a big number of mobile devices and Web Clients connected simultaneously to the Mobile Server.

2

Without Direct Streaming a big system will require many Mobile Servers to be able to transcode and send video to these devices. Direct streaming will optimize the use of the Mobile Server.

3

Currently supported for XProtect Mobile and XProtect Web Client

4

Optimizes server performance – drastically reduces your mobile server load

XProtect® 2022 R1

XProtect® Smart Client - New export workflow

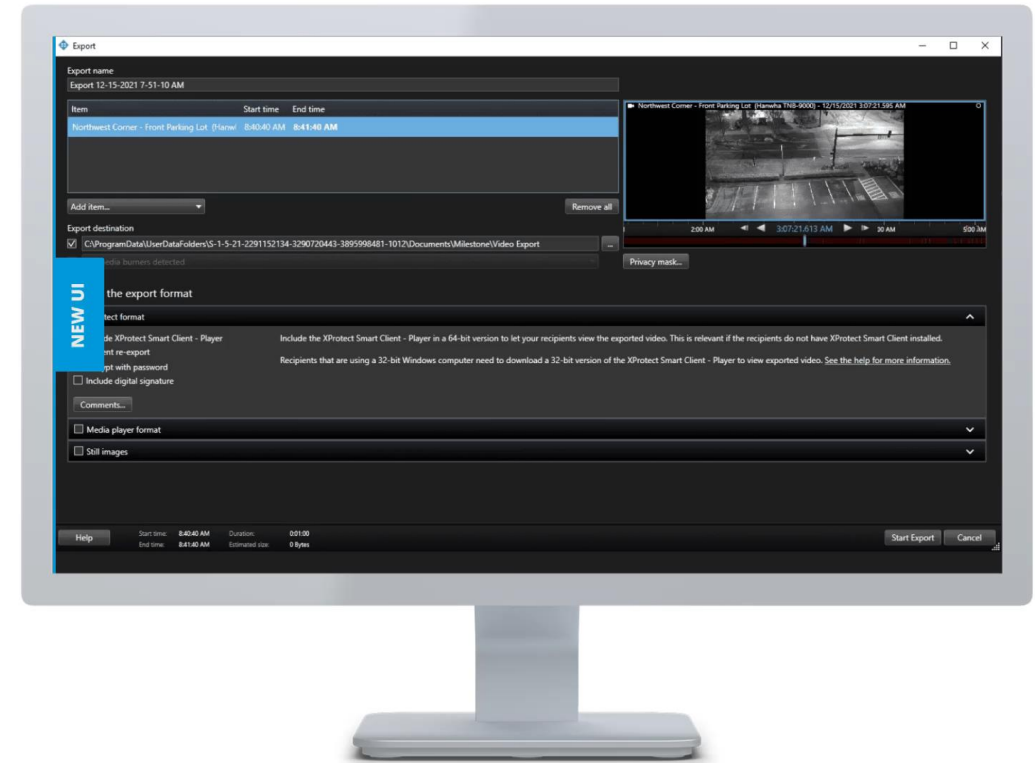
Experience a better XProtect

No matter the size of your operations, incidents will take place regularly – and often you need to be able to document them quickly and efficiently. That's why we are making exporting video evidence easier by improving the export workflow in the XProtect Smart Client.



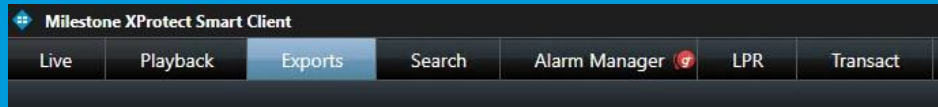
Improved Export workflow

Now, operators have access to a dedicated “Export tab” to create an easy-to-navigate interface and a more straightforward overview of the task at hand.



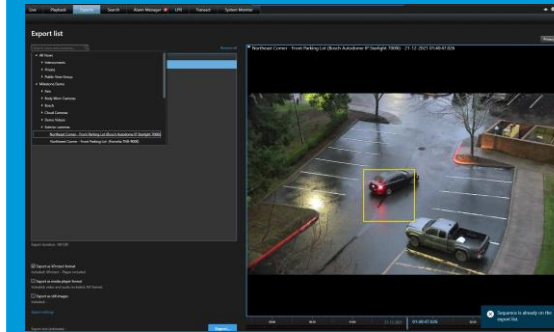
▶ Play to see the new Export interface

Improved Export workflow



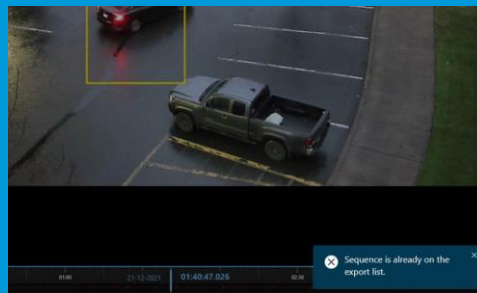
Flexible interaction

The dedicated export tab is designed to allow for a more flexible workflow. Instead of displaying the export dialog as a modal window, operators can now move in and out of the export workflow, switching between tabs while building the list of evidence to be exported.



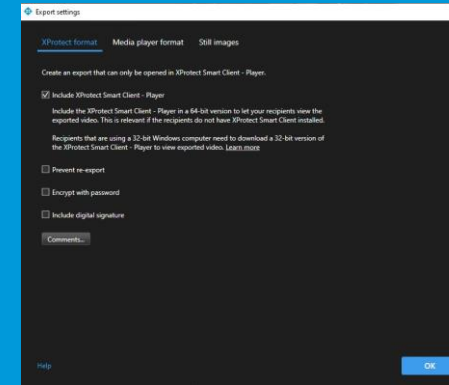
Bigger preview

The preview of the selected video clips has been enlarged, giving the operator a better picture of what he is about to export.



More feedback to the operator

The enhanced export workflow provides the operator with simple feedback and/or instruction (also known as notification toasts) about the actions done to make the experience as easy as possible.



Less clutter

Frequently used export settings are easily accessible and less frequent settings are now grouped into a separate dialogue, putting the focus on what the operator needs the most.

XProtect® 2022 R1

Milestone AI Bridge



MILESTONE AI BRIDGE

The Milestone AI Bridge eases the integration of intelligent video analytics applications with XProtect. This enables you to analyze video intelligently and create valuable insights.





Easy deployment

Easily integrate and deploy AI and intelligent video and analytics applications with XProtect.

Greater choice

Extend your video surveillance system with intelligent video analytics designed for today and tomorrow's needs.

Decision making

Analyze video intelligently and make decisions based on data-driven insights.

Requirements

The first version of the AI Bridge focuses on **NVIDIA's EGX platform**. It eases the integration of NVIDIA GPU accelerated intelligent video analytics and AI applications with XProtect.



EGX Enterprise Platform

EGX



XProtect **Corporate**
XProtect **Expert**



◆ milestone | AI Bridge

Benefits

Guaranteed compatibility of many Intelligent Video Analytics applications with NVIDIA's EGX platform and Milestone Systems XProtect VMS.



NVIDIA-certified applications are built to make deployment and solution sizing easy and predictable. Scale your installation based on your needs.



NVIDIA offers a wide community of AI and Analytics partners. Create the insights that you need - no matter what you are looking for.



Work with the best in class. Milestone Systems is a leading provider of open platform video management software; NVIDIA is the world leader in visual computing technologies.

MAKE THE
WORLD SEE



milestone

