



# New feature presentation

XPROTECT 2022 R3

# XProtect 2022 R3 Product compatibility

	XProtect <b>Essential+</b>	XProtect <b>Express+</b>	XProtect <b>Professional+</b>	XProtect <b>Expert</b>	XProtect <b>Corporate</b>
Incident Manager Licensed Add-on		√	√	√	Included
SSO Support for Web and Mobile Client	√	√	√	√	√
Biometry Support on Mobile Client	√	√	√	√	√
Management Client filter	√	√	√	√	√
ONVIF Profile M Searchability in Smart Client		√	√	√	√
Smart and Web Client UX Updates	√	√	√	√	√
Telemetry in Smart Client	√	√	√	√	√
Metadata Search across-products		√	√	√	√
Mobile Device Manager Support	√	√	√	√	√
Screenshot in Mobile Client	√	√	√	√	√
Time picker	√	√	√	√	√
Navigation, toasts and search for Web Client	√	√	√	√	√
LPR Server Scalability		√	√	√	√
Device Packs	√	√	√	√	√
XProtect 2022 R3 on AWS	√	√	√	√	√



An aerial photograph of New York City, showing the dense skyline of Manhattan and the East River. The Manhattan Bridge is a prominent feature, stretching across the water. The sky is a mix of blue and light orange, suggesting a sunrise or sunset. The water is a deep blue, and a small boat is visible on the river. The overall scene is a classic view of the city from an elevated perspective.

# XProtect Incident Manager Licensed Add-on

# Changes to XProtect Incident Manager

- XProtect Incident Manager is now available as a **licensed add-on** for:
  - **XProtect Express+**
  - **XProtect Professional+**
  - **XProtect Expert**
- It is still included as a **key feature in XProtect Corporate.**



# Capture evidence while incidents unfold

With the new XProtect Incident Manager, operation managers can manage incidents directly in their video management software and connect video footage with incidents as they unfold.

# Incident reporting made easy

- XProtect Incident Manager gives you complete control over export formats and other settings related to wide evidence export.
- XProtect Incident Manager allows documenting all incident details in a single report that can be printed or converted to a PDF.
- You can export video evidence by automatically populating your video export list, which integrates seamlessly with your XProtect Smart Client.





# Why should you manage incidents in your VMS?

- The first clue of a security breach is often an operator noticing something out of the ordinary – which can happen several times a day.
- With XProtect Incident Manager, operators can start documenting these potential incidents from the start, then add in additional evidence and details to get the full picture directly in the VMS.



# Manage and monitor incident with just one click

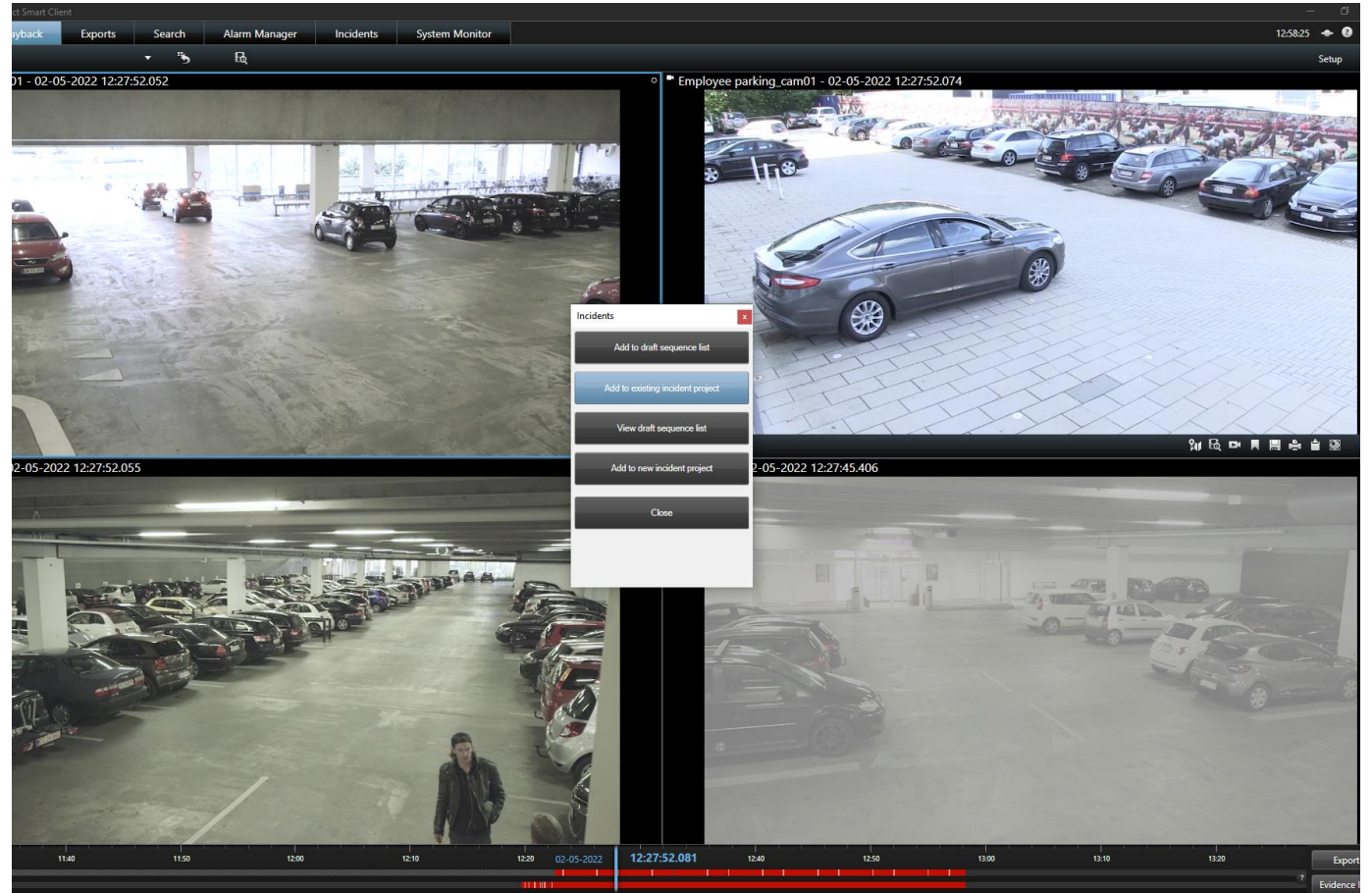
Follow an incident as it unfolds and easily assemble video sequences from several cameras tied to an incident





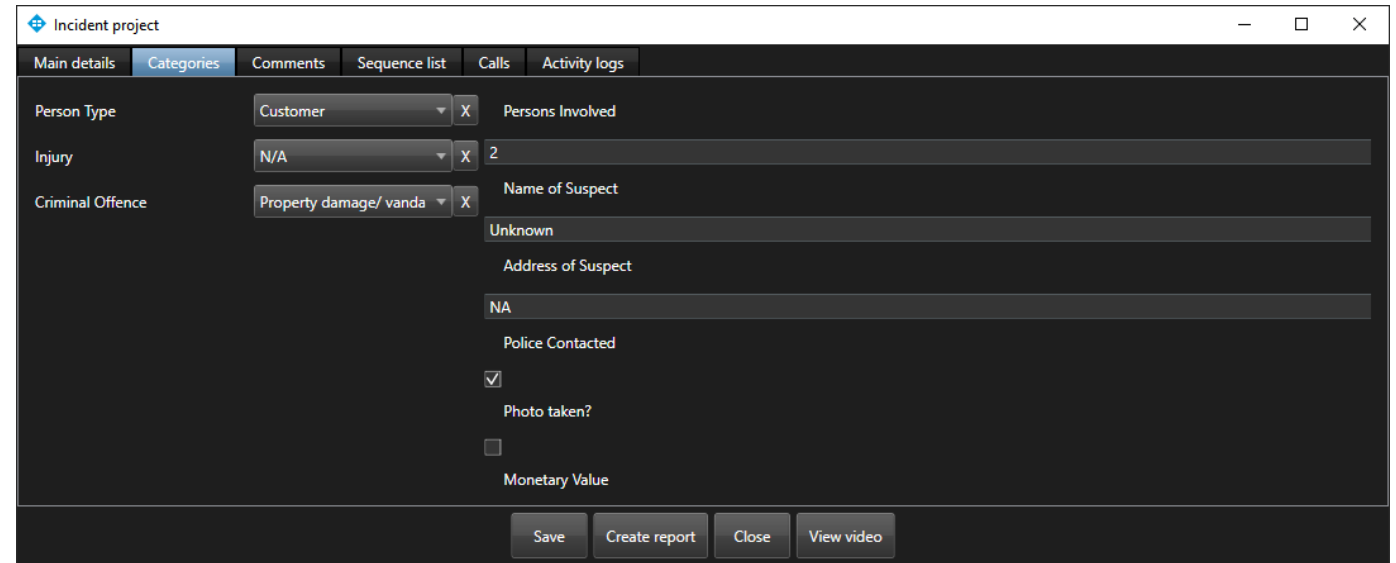
# Incident creation

It is very intuitive and easy to add additional cameras to an incident or create a project related to footage that happened recently



# Incident project user interface

Organize and customize your user interface to suit your industry and business needs with incident types and categories



The screenshot displays a web application window titled "Incident project". The interface features a dark theme and a navigation bar with tabs: "Main details", "Categories", "Comments", "Sequence list", "Calls", and "Activity logs". The "Categories" tab is active, showing a form with the following fields:

- Person Type:** A dropdown menu set to "Customer" with a close button (X).
- Injury:** A dropdown menu set to "N/A" with a close button (X).
- Criminal Offence:** A dropdown menu set to "Property damage/ vanda" with a close button (X).
- Persons Involved:** A text input field containing the number "2".
- Name of Suspect:** A text input field containing "Unknown".
- Address of Suspect:** A text input field containing "NA".
- Police Contacted:** A checkbox that is checked.
- Photo taken?:** A checkbox that is unchecked.
- Monetary Value:** A text input field.

At the bottom of the form, there are four buttons: "Save", "Create report", "Close", and "View video".

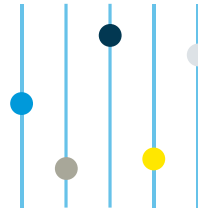


# Key benefits



## Easily assign footage to incidents

Start an incident and XProtect Incident Manager will automatically capture the video you are watching live and add it to the incident. Operators can easily add additional footage later.



## Accurately record incidents

XProtect Incident Manager accurately records all activities, actions and changes related to an incident in the log system, keeping track of all changes done by users.



## Seamlessly export video evidence

Users can export video evidence automatically by adding incident video to the export list.



## Configure your system to meet your needs

Users can organize specific incident types and choose the information they want to capture and share.



## Keep track of all your data

XProtect Incident Manager records and stores incident information only in the system for better control during export stages.

A panoramic view of Paris, France, featuring the Eiffel Tower prominently on the right side. The city's dense architecture and various domes are visible under a sky with soft, wispy clouds. A blue gradient overlay covers the left side of the image, where the main text is placed.

# Centralized Search Improvements



# Search Agent Availability Across Products

- We are expanding the **metadata search functionality** to include **XProtect Express+ and Professional+** to meet the video analytics needs of our customers and technology partners.
- With XProtect 2022 R3, **all built-in search agents are available in all paid versions of XProtect** – making our portfolio more competitive:
- **ONVIF metadata** and **third-party search plugins** searchable in XProtect Express+, Professional+, Expert, and Corporate





# Extended ONVIF Profile-M Metadata Support

- With XProtect 2022 R3, there is **extended metadata support** for **ONVIF Profile-M** categories in **Vehicle** and **People**:
  - **Vehicle** category to include **“color”** attribute
  - **People** category to include **“gender”** and **“height”** attributes
- This extended metadata support will allow users to:
  - **Search faster** using XProtect Smart Client
  - Have a more **refined search experience**
  - End up with **fewer and more relevant search results**
  - Take **full advantage of cameras with** the latest **video analytics**
- People, Vehicle, and Location categories are available in all paid versions of XProtect





An aerial photograph of a city, likely New York City, showing a wide river (the Hudson River) and a dense urban landscape with numerous skyscrapers and buildings. The image is overlaid with a semi-transparent blue gradient that is darker on the left side and lighter on the right. The text 'Product Security Features' is written in white, bold, sans-serif font across the middle of the image.

# Product Security Features



# External IDP (SSO) Support in XProtect Web & Mobile

- With XProtect 2022 R3, users can now log in to **XProtect Web and Mobile Client** with their preferred **identity provider service**.
- Extending SSO support to XProtect Web and Mobile allows organizations to:
  - **Enhance the security** of their installation by avoiding unauthorized access to their VMS
  - Implement **cybersecurity measures** in alignment with their **security protocols**
  - **Improve user experience** via the use of **one strong password** across all platforms
  - Easily **manage their users and user groups** through the help of their external IDP setup





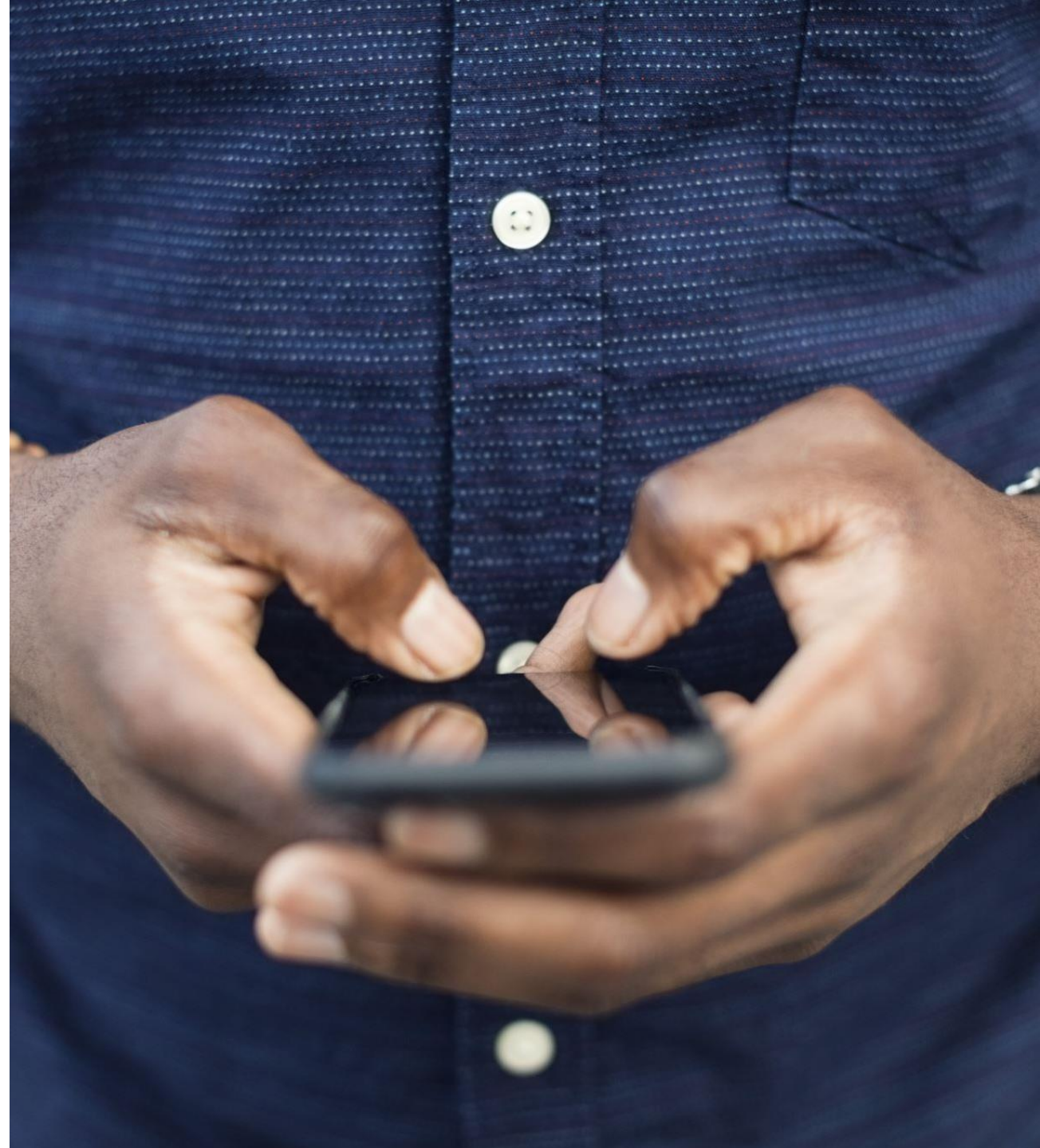
# Biometry Support in XProtect Mobile

- With XProtect 2022 R3, users can now use **biometrics** or **device credentials** to verify their identity to **access XProtect Mobile**.
- Available for both **Android** and **iOS users**
- This feature improves **user experience** and **product security** simultaneously by allowing quicker and more secure access to XProtect Mobile



# Mobile Device Management in XProtect Mobile

- With XProtect 2022 R3, XProtect Mobile now supports **mobile device management (MDM)**.
- Through **MDM**, organizations can **manage and secure** devices, apps, and data **from a unified console**.
- Large enterprises that already own MDM can now add XProtect Mobile to their list of approved apps, making it **easier to deploy** across the organization and **more secure**.





An aerial photograph of a city, likely Portland, Oregon, featuring a large river, a cable-stayed bridge, and a highway interchange. The city is surrounded by green hills and mountains in the distance. The sky is bright blue with scattered white clouds. The entire image has a semi-transparent blue overlay.

# Other updates



# Please note

- **Windows Server 2012** and **Windows Server 2012 R2** are no longer supported Windows versions with XProtect 2022 R3.

MAKE THE  
WORLD SEE



milestone

